



ZKSoftware | ZKAccess | ZKiVision | ZKAFIS | ZKBiolock

Leading Security  
and Time Management  
Solution Provider

[www.zkteco.com](http://www.zkteco.com) >>>

# Company Introduction:



ZKTeco is a leading global developer of security and time management solutions. It is subdivided into 5 distinct business segment/divisions which are known as: ZKSoftware, ZKAccess, ZKivision, ZKBioblock and ZKAFIS. Each ZKTeco division has a dedicated team of professionals to serve worldwide customers and partners. At our state-of-the-art 50,000 square meters ISO9001-certified R&D/Trial and Manufacturing centre, we control product design, manufacturing, component assembly and logistics/shipping -- all under one roof.

ZKTeco has over 1500 employees at its R&D/Manufacturing facility in China along with branch offices/subsidiaries in USA, Spain, Brazil, South Africa, Dubai, Indonesia, Mexico, Thailand, India and Egypt. Our global office further enhances our ability to provide local product/logistic support, and service our customers/partners more effectively and efficiently.



ZKTeco has sold over 8.5 million units and serves customers in over 180 countries. Currently ZKTeco controls 80% Market Share in China and 40% worldwide Market share and growing. ZKTeco has been continuously awarded the "Top 10 China Security Brand" and "Top 10 National Brand" in the past 5 years. ZK has been awarded 85 patents and earned a reputation for technical innovation, quality, performance, reliability and speed-to-market. These are just a few reasons why OEM's, software developers, integrators, dealers and end users turn to ZK.



E.U. Branch



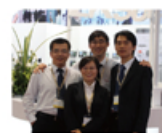
S.A. Branch



Brazil Branch



Dubai Branch



Thailand Branch

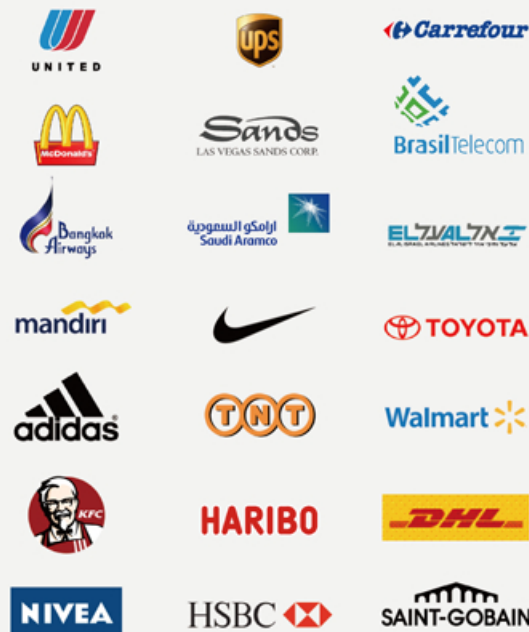


U.S.A. Branch



India Branch

ZK's footprints can be seen all over the world. Based on ZK's unrelenting pursuit for innovation and technical achievement, some of the world's famous companies adopt ZK's products. Such as:



Nowadays, each year we are repeatedly award the "Top 10 China Security Brand" and "Top 10 National Brand" in the past 5 years.



2011 Top10 China Security Brand



2011 Top10 National Brand



## Time & Attendance

From an office with five employees, to a large manufacturer with 50,000, every organization has to track the work-time of its employees, control access to certain areas and quickly identify staff or materials. Because every industry is different, ZKSoftware offers a large selection of Time & Attendance solutions to manage such tasks.



## Access Control

Restricting access to sensitive areas by controlling key access points is important to organizations. ZK Readers help companies maintain security through efficient and reliable Access Control. Using card and fingerprint ZK Readers, firms can authorize which staff can open which doors on specific days or times.



## Border Security

ZKAFIS provides large-scale fingerprint matching solutions and safer, faster, accurate and convenient security services, which can be used in border inspection and make online matching more accurate and improve homeland security.



## Hotel Check-in

A simple flash of an ID card, or touch of the finger, enables guests at major hotels and resorts to access and secure rooms and facilities using our Readers.



## Airport Security

ZK Readers protect passengers, aircraft and cargo at airports worldwide by restricting access to secure areas. Only authorized staff can gain entry via face, fingerprint and/or flash card identification.



## Crowd Control & Management

At large events, crowd control and management is a major challenge. Our products are integrated with applications that read and register the tickets of concertgoers, permit only authorized staff to enter secure areas and much more.



## Locker Control

At fitness clubs, airports and storage facilities, ZK Readers work with industry applications to secure access to lockers and protect valuables, while also affording easy access for locker owners.



## Time and Attendance Management Solution

Time & Attendance is a rapidly growing market especially in industries where employees need real-time access to their time records and schedules. To help lessen the costs associated with T&A and Workforce Management, ZK provides innovative time & attendance terminals which can read employees' faces, fingerprints, and/or ID cards.

## New Products

### Biopad100

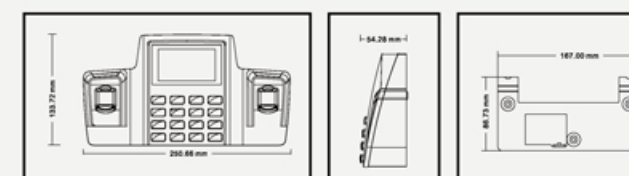
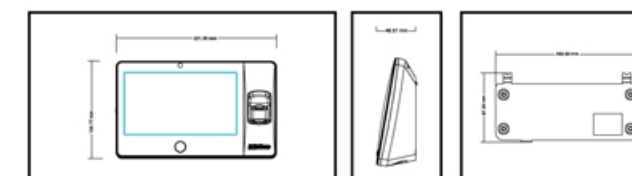


### 7 Inches Touch Screen Time and Attendance Terminal

- Card capacity: 10000
- Fingerprint templates: 6000
- Transaction capacity: 300000
- Standard built-in Wi-Fi
- Built-in 300,000 pixels camera
- Functions: SMS, DST, Scheduled-bell, Self-Service Query, Automatic Status Switch, etc.
- Options: ID/Mifare/HID, 14 digit user ID, ADMS, Backup battery, SD card



Biopad100 Video



### DS100

### Dual-sensor Time & Attendance terminal

- Card capacity: 10000
- Fingerprint templates: 6000
- Transaction capacity: 100,000
- Color TFT screen with GUI Interface
- Communication: TCP/IP, USB-host
- Options: ID/Mifare, Wi-Fi, GPRS, Photo ID, printer, Backup battery, SD card



DS100 Video



# Face Time Attendance Terminal

	VF300	VF600	VF700
			
Display	3 Inches Touch Screen	3 Inches Touch Screen	3 Inches Touch Screen
Face Capacity	200(1:N)	400(1:N)	400(1:N)
ID Card Capacity	10,000	10,000	10,000
Logs Capacity	100,000	100,000	100,000
Communication	TCP/IP, USB Host	TCP/IP, USB(host and client)	TCP/IP, USB(host and client)
Standard Functions	/		
Optional Function	Mifare Card.	Mifare Card.	Mifare Card.
Verification Speed	≤1 sec	≤1 sec	≤1 sec
Dimensions(W×H×T)	104.70×160.00×36.00 (mm)	104.70×160.00×36.00 (mm)	104.70×160.00×36.00 (mm)

	VF380	VF680	VF780
			
Display	3 Inches Touch Screen	3 Inches Touch Screen	3 Inches Touch Screen
Face Capacity	200(1:N)	400(1:N)	400(1:N)
ID Card Capacity	10,000	10,000	10,000
Logs Capacity	100,000	100,000	100,000
Communication	TCP/IP, USB Host	TCP/IP, USB(host and client)	TCP/IP, USB(host and client)
Standard Functions	/		
Optional Function	Mifare Card.	Mifare Card.	Mifare Card.
Verification Speed	≤1 sec	≤1 sec	≤1 sec
Dimensions(W×H×T)	104.70×160.00×36.00 (mm)	104.70×160.00×36.00 (mm)	104.70×160.00×36.00 (mm)

# Multi-Bio Time Attendance Terminal

- 4.3 inches Touch Screen, Touch Keypad
- Face capacity: 500
- Fingerprint capacity: 3,000
- ID card capacity: 10,000
- Record capacity: 100,000
- Attendance Features: SMS, Workcode, DST, Scheduled bell, etc.
- Communication: TCP/IP, USB Host, RS232/485, Wiegand Out, Access Control interface for 3rd party Electric Lock, Door Sensor, Exit Button
- Options: Mifare card, Wi-Fi, GPRS

iFace202



iFace302



iFace402



- 4.3 inches Touch Screen, Touch Keypad
- Face capacity: 500
- ID card capacity: 10,000
- Record capacity: 100,000
- Attendance Features: SMS, Workcode, DST, Scheduled bell, etc.
- Communication: TCP/IP, USB Host, RS232/485, Wiegand Out, Access Control interface for 3rd party Electric Lock, Door Sensor, Exit Button
- Options: Mifare card, Wi-Fi, GPRS

iFace201



iFace301



iFace401



# Fingerprint Time Attendance Terminal

## 8 inches TFT Touch Screen

- Operation System: Linux /WinCE
- Fingerprint capacity: 8,000
- Record capacity 200,000
- Attendance Features: SMS, Workcode, DST, Scheduled Bell, Photo-ID etc.
- Communication: TCP/IP, USB Host, RS232/485, and Access Control Interface for 3rd Party Electric Lock, Door Sensor, Exit Button
- High Resolution Camera, Backup Battery
- Options: GPRS, Wi-Fi, Printer

iClock2800



iClock3800



## 3.5 inches TFT Time Attendance & Access Control Serials

- Fingerprint capacity: 8,000
- Record capacity: 200,000
- Attendance Features: SMS, Workcode, DST, Scheduled bell, Photo-ID etc.
- Communication: TCP/IP, RS232/485, USB Host, Wiegand In&Out, and Access Control Interface for Electric Lock, Door Sensor, Exit Button, Alarm, Door Bell, Anti-passback
- Options: ID card, Mifare card, Wi-Fi

iClock480



iClock580



iClock680



iClock700



iClock880



## 3.5 inches TFT Time Attendance Serials

- Fingerprint capacity: 8,000
- Record capacity: 200,000
- Communication: TCP/IP, USB Host, RS232/485
- Attendance Features: SMS, Workcode, DST, Scheduled bell, Photo ID etc.
- Options: ID card, Mifare card, Wi-Fi

iClock260



iClock360



iClock460



iClock660



## 3 inches TFT Time Attendance Serials

- Fingerprint capacity: 3,000
- Record capacity: 100,000
- Communication: TCP/IP, RS232/485
- Attendance Features: SMS, Workcode, DST, Scheduled bell, etc.
- Options: ID card, Mifare card

X628-C



X628-TC



A7-C



A8-C



B3-C



U160-C



U260-C



U300-C



U560-C



T4-C



T5-C



T6-C



TK100-C



# RFID Time Attendance Terminal

IM2500



- Operation System: Linux /WinCE
- 8 inches TFT touch screen, High Resolution Camera, Backup Battery
- ID Card Capacity: 30,000
- Record capacity: 100,000
- Communication: TCP/IP, USB Host, RS232/485
- Attendance Features: SMS, Workcode, DST, Scheduled bell, Photo-ID etc.
- Options: ID card, Mifare card, Wi-Fi, GPRS

S680



S880



- 3.5 inches TFT
- High resolution camera(S880)
- ID Card Capacity: 10,000
- Record capacity: 50,000
- Attendance Features: SMS, Workcode, DST, Scheduled bell, Photo-ID etc.
- Communication: TCP/IP, USB Host, RS232/485, Access Control Interface for Electric Lock, Door Sensor, Exit Button, Alarm, Door Bell, Anti-passback
- Options: ID card, Mifare card, Wi-Fi, GPRS

- 3.5 inches TFT
- ID Card Capacity: 10,000
- Record capacity: 50,000
- Attendance Features: SMS, Workcode, DST, Scheduled bell, Photo-ID etc.
- Communication: TCP/IP, USB Host, RS232/485
- Options: ID card, Mifare card, Wi-Fi, GPRS

S400



S500



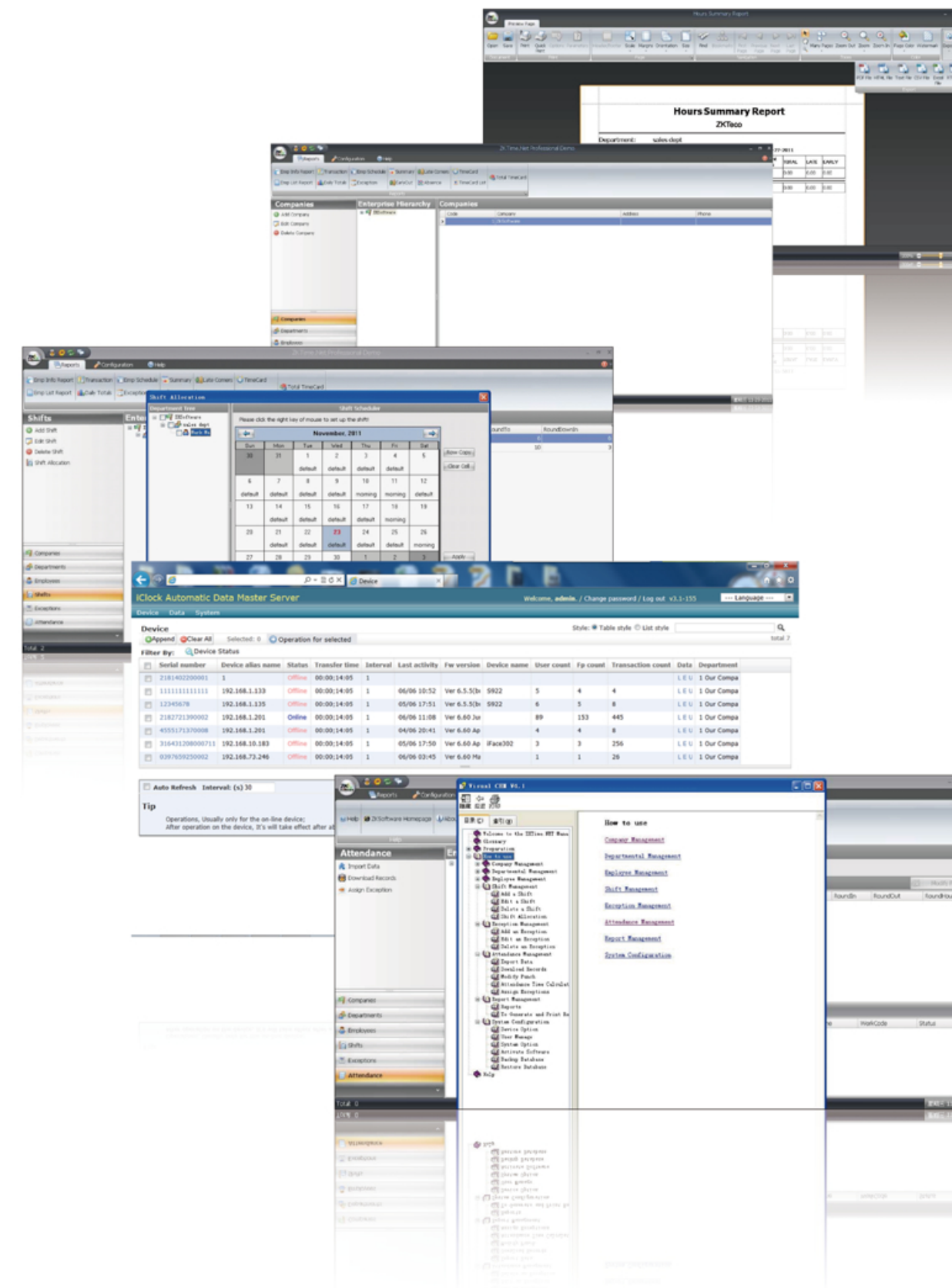
# Time Attendance Software Solution

ZK provides total software solutions to meet different requirements, including PC- based and Web-based software.

**ZKTime.net**

ZKTime.Net is a PC-based time & attendance software application which has a very user-friendly interface. With ZKTime.net users can easily create work-shifts and produce dozens of timely reports. An online comprehensive Help file is available to answer all your questions.

With ZKTime.Net your employee-time reports will be created faster and error-free.





## Access Control Management Solution

ZKAccess is a division of ZKTeco, which engaged in access control products and solutions. The product line includes IP-based standalone access control, networked access control panel, readers, tripod turnstile and accessories. We provide one-stop R&D and manufacturing service for business partner.

# IP-based Standalone Access Control Terminals

## Multi-Biometric Identification Terminals

### MultiBio700



- Face Capacity: 500
- Fingerprint Capacity: 2000
- Log Capacity: 100000
- Communication: TCP/IP, RS485, RS232, USB-host
- Wiegand Input and Output
- Access Control Interface for 3rd party Electric Lock, Door Sensor, Exit Button, Alarm, Doorbell

## Face Identification Terminals

### FAC700



- Face Capacity: 500
- Log Capacity: 100000
- Communication: TCP/IP, RS485, RS232, USB-host
- Wiegand input and output
- Access control interface for 3rd party Electric Lock, Door Sensor, Exit Button, Alarm, and Doorbell

## Fingerprint Identification Terminals

### F18



- 2.4 inches TFT Color Screen
- Fingerprint Capacity: 1500
- Log Capacity: 30000
- Communication: TCP/IP, RS485, RS232, USB-host
- Wiegand Input and Output
- Access Control Interface for 3rd party Electric Lock, Door Sensor, Exit Button, Alarm, Door Bell

### TF1700



- IP65 Waterproof
- OLED Screen
- Fingerprint Capacity: 2200
- Card Capacity: 10000
- Log Capacity: 30000
- Communication: TCP/IP, RS485, USB-host
- Wiegand Input and Output
- Access Control Interface for 3rd party Electric Lock, Door Sensor, Exit Button, Alarm, Door Bell

### LA2000/LA2000-Mercury



- Fingerprint Capacity: 2200/8000
- Log Capacity: 30000/200000
- Communication: TCP/IP, RS485, RS232, USB-host
- Wiegand Input and Output
- Lumidigm Venus Sensor/Lumidigm Mercury Sensor
- Access Control Interface for 3rd party Electric Lock, Door Sensor, Exit Button, Alarm, Door Bell

## F703-S



- Fingerprint Capacity: 2200
- Log Capacity: 50000
- Communication: TCP/IP, RS485, RS232, USB-host
- Wiegand Input and Output
- Access Control Interface for 3rd party Electric Lock, Door Sensor, Exit Button, Alarm, Door Bell

## F702-S



## F8



## F8-T



## SF101



- Metal Casing
- Fingerprint Capacity: 200
- Card Capacity: 100
- Log Capacity: 30000
- Communication: RS485, RS232, USB-client
- Access Control Interface for 3rd party Electric Lock, Door Sensor, Exit Button, Alarm, Door Bell

## MA300



- Metal Casing with IP54 Waterproof
- Fingerprint Capacity: 1500
- Card Capacity: 10000
- Log Capacity: 100000
- Communication: TCP/IP, RS485, USB-host
- Wiegand Input and Output
- Access Control Interface for 3rd party Electric Lock, Door Sensor, Exit Button, Alarm, Door Bell

## F11



- Fingerprint Capacity: 1500
- Card Capacity: 10000
- Communication: TCP/IP, RS485, RS232
- Wiegand Output
- Access Control Interface for 3rd party Electric Lock, Exit Button, Alarm

## F6



- Fingerprint Capacity: 500
- Log Capacity: 30000
- Communication: RS485, SD Card
- Wiegand Output
- Access Control Interface for 3rd party Electric Lock, Door Sensor, Exit Button, Alarm, Door Bell

## RFID Identification Terminals

### SC103



### SC403



### SC503



### SCR100



- Card Capacity: 30000
- Log Capacity: 50000
- Communication: TCP/IP, RS485, RS232, USB-host
- Wiegand Input and Output
- Professional Time Attendance Function including SMS, Workcode, DST, Scheduled Bell, Photo-ID etc.
- Access Control interface for 3rd party Electric Lock, Door Sensor, Exit Button, alarm, Door Bell

- Card Capacity: 30000
- Log Capacity: 50000
- Communication: TCP/IP, RS485, RS232, USB-host
- Wiegand Input and Output
- Access Control interface for 3rd party Electric Lock, Door Sensor, Exit Button, alarm, Door Bell

# Access Control Panel

## Key Features:



**Truly Internal Biometric Identification:**  
InBIO matches fingerprints on the panels. The FR Series readers transmit fingerprint templates to inBIO via RS485 for fast and accurate matching with templates stored in the database. Wiegand inputs are also provided for traditional RFID readers.



**Door Control and More:**  
Along with relay contacts for controlling door locks, easily programmable auxiliary relays can be used for additional control and interface to lights, alarms, intrusion detection panels, or even extra locking devices or gate controllers.



**Communication:**  
The controllers can be easily installed on your network and support both TCP/IP and RS-485 communication. Auto-discovery tool allows setting and modification of network parameters directly and easily.



**Options:**  
Three different sizes of controllers can suit various project needs and reduce the cost of unnecessary capacity. 1-door, 2-door, and 4-door models can be mixed and matched in optimized system architecture.



**Capacity:**  
The system supports up to 3000 fingerprint templates, 30,000 badge users and stores up to 100,000 events and transactions. Data is preserved if there is power outage. Controller can continue operating if network connection is interrupted.



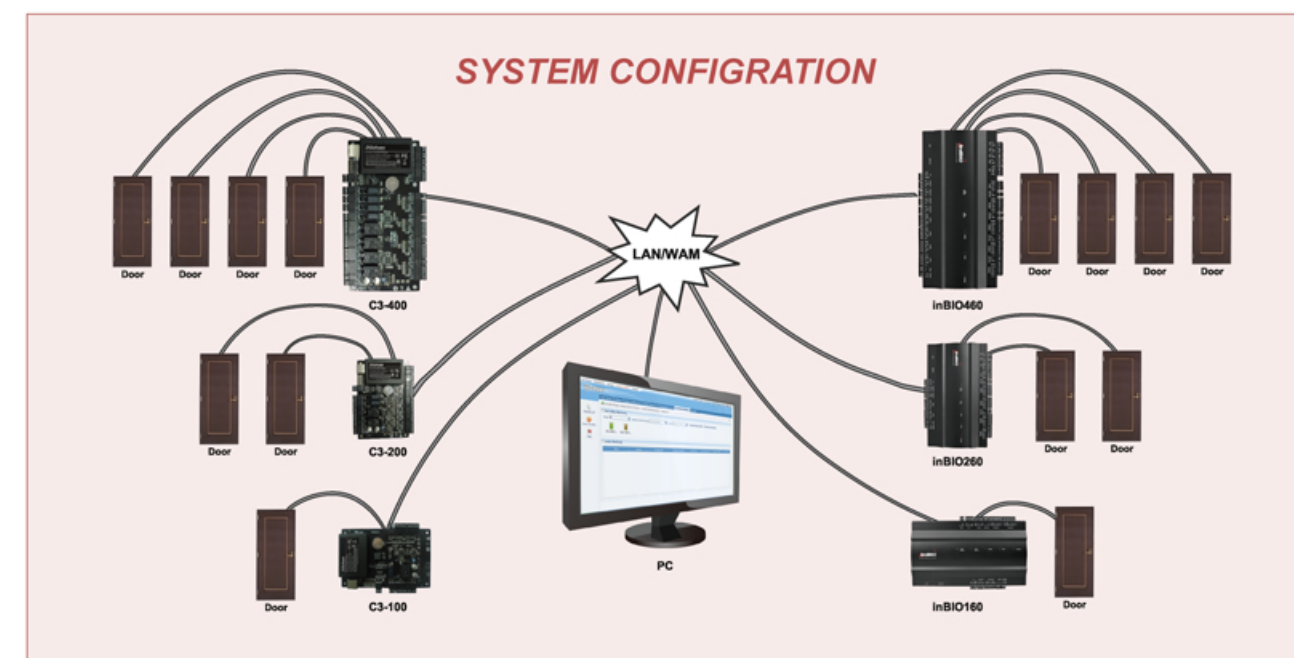
**Built-in Advanced Access Control Functions:**  
Anti-passback, First-Card opening, Multi-Card opening, Duress Password Entry, and Auxiliary input/output linkages are built into controller firmware.



**Lowest Total Cost:**  
The controller firmware can be upgraded in the field. New controller features can be loaded to extend and expand your investment value without any advanced tools.






**For Software Developers:**  
Free SDK is available for integrators and OEMs to integrate the controller with their or existing security or personnel management applications. Upon request, ZK can customize firmware to meet any customer requirements.



Networked Access Controller

	C3-100	C3-200	C3-400
			
Card Capacity:	30000	30000	30000
Event Capacity:	100000	100000	100000
Communication:	TCP/IP, RS485	TCP/IP, RS485	TCP/IP, RS485
Wiegand Input:	2ea	4ea	4ea
Aux.output:	1ea	2ea	4ea
Aux.input:	none	2ea	4ea

Biometric Networked Access Controller

	inBIO160	inBIO260	inBIO460
			
Card Capacity:	30000	30000	30000
Fingerprint Capacity:	3000	3000	3000
Event Capacity:	100000	100000	100000
Communication:	TCP/IP, RS485	TCP/IP, RS485	TCP/IP, RS485
Wiegand Input:	2ea	4ea	4ea
Aux.output:	1ea	2ea	4ea
Aux.input:	1ea	2ea	4ea
Aux:	RS485 for Fingerprint Reader	RS485 for Fingerprint Reader	RS485 for Fingerprint Reader

Application



Real-time Monitoring



Vehicle Access



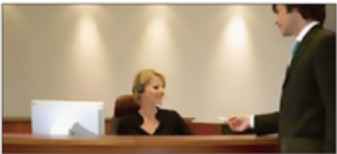
Elevator Control



Surveillance Linkage



Time & Attendance



Visitor Management

Fingerprint Reader



FR1200

- IP65 Water Proof
- Fingerprint Identification
- Read 125K Proximity Card
- Communication to Master Controller: RS485

RFID Wiegand Reader

- Water-proof
- 125KHz Proximity/13.56MHz Mifare Card Reader
- 26bit/34bit Wiegand Out
- Extend LED/Buzzer Control



KR100E/M



KR101E/M



KR102E/M



KR200E/M



KR201E/M



KR202E/M



KR300



KR500E/M



KR501E/M



KR502E/M



KR503E/M



KR600E/M



KR601E/M



KR602E/M

KR1000



- Water-proof
- 125KHz Proximity Card Reader
- 90-120cm Read Range
- Buzzer Control
- 26bit Wiegand Out

# Tripod Turnstile




- Cost-effective entrance management solution with high reliability
- Rustproof and durable mechanical equipment
- Semi-automatic or full-automatic boom

TS-100,TS-100A: Tripod turnstile

TS-101,TS-101A: Tripod turnstile integrated with RFID reader and controller

TS-102,TS-102A: Tripod turnstile integrated with both fingerprint and RFID reader and controller

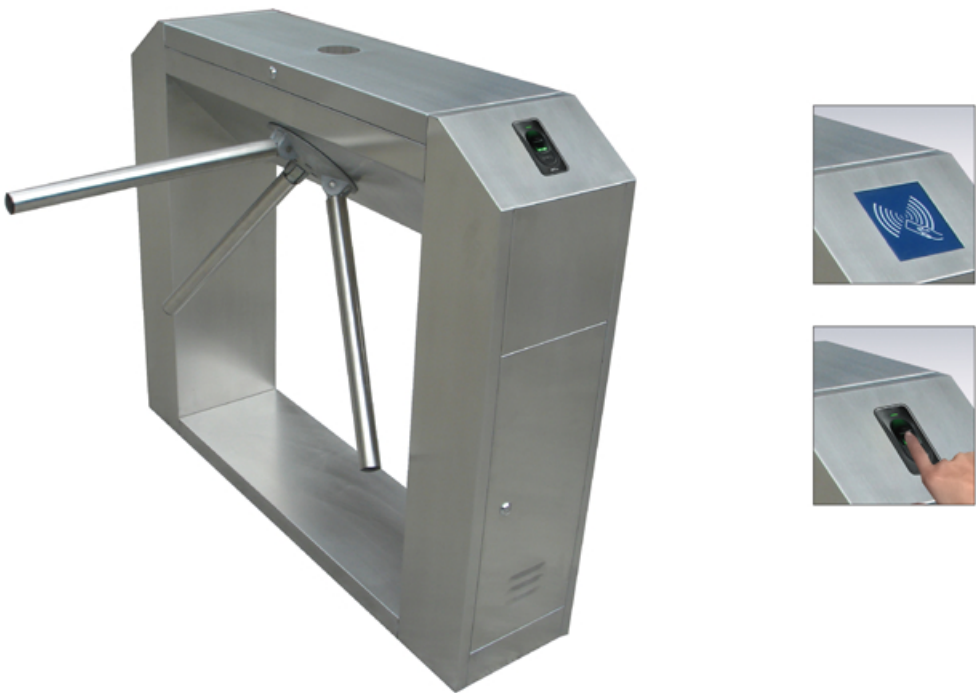




Product name	TS-100	TS-100A	TS-101	TS-101A	TS-102	TS-102A
Picture						
Dimension	450L*280W*1000H(mm)		450L*280W*1000H(mm)		450L*280W*1000H(mm)	
Net Weight	35KG		36KG		36KG	
Packing Dimension	520L*350W*1070H(mm)		520L*350W*1070H(mm)		520L*350W*1070H(mm)	
Gross Weight	45KG		46KG		46KG	
Boom	Semi-automatic	full-automatic	Semi-automatic	full-automatic	Semi-automatic	full-automatic

TS-200,TS-200A: Tripod turnstile

TS-201,TS-201A: Tripod turnstile integrated with RFID reader and controller

TS-202,TS-202A: Tripod turnstile integrated with both fingerprint and RFID reader and controller



Product name	TS-200	TS-200A	TS-201	TS-201A	TS-202	TS-202A
Picture						
Dimension	1200L*280W*990H(mm)		1200L*280W*990H(mm)		1200L*280W*990H(mm)	
Net Weight	45KG		46KG		46KG	
Packing Dimension	1280L*390W*1060H(mm)		1280L*390W*1060H(mm)		1280L*390W*1060H(mm)	
Gross Weight	58KG		59KG		59KG	
Boom	Semi-automatic	full-automatic	Semi-automatic	full-automatic	Semi-automatic	full-automatic

# Accessory

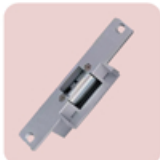
## Electric Lock



Magnetic lock



Electric Bolts



Electric Strikes

## Exit Button



K1-1



K1-1D



EX-802

## Card & Tag



## Break Glass Button



## Sensor and Siren



## RS232-485 Converter



## ZK4500



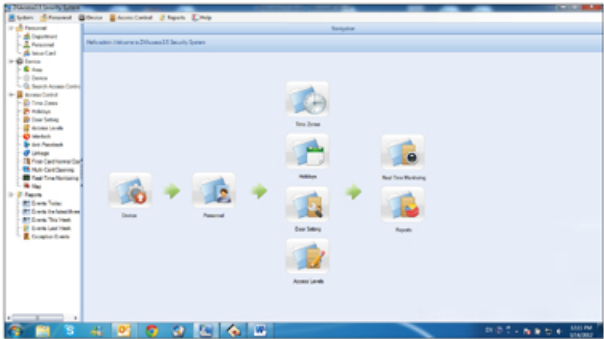
## CR10E/M



# Software

## ZKAccess 3.5

IP access control management software for SME



## ZKAccess 5.0

Integrated access control management software



## Software Information:

		ZKAccess 3.5	ZKAccess 5.0
System	License	Free	Yes
	System Architecture	Server/Client	Server/Browser
	DB	Access, MSSQL	MySQL, MS SQL
	Max. Device	20	1024
Access Control	Time Zone	255	255
	Access Level	No limitation	No limitation
	Anti-pass back	Yes	Yes
	Visual Map	Yes	Yes
	Event monitoring	Yes	Yes
	Linkage	Yes	Yes
	Interlock	Yes	Yes
	Multi-card opening	Yes	Yes
	First-card opening	Yes	Yes
	Passage Mode	Yes	Yes
	Video integration	N/A	Yes
	Visitor Management	N/A	Yes
Time Attendance	Elevator Control	N/A	Yes
	Work time calculation	Yes	N/A
	Shift Management	Weekly	N/A
	Holiday/Leave Management	Yes	N/A
	Report	Yes	N/A
In/Out board		Yes	N/A



## ZKiVision

**The leading provider of intelligent surveillance & security products and solutions**

Established in 2010, ZKiVision is an IP based Video Surveillance solution division of ZKTeco which focuses on providing competitive, feature rich security products like IP cameras, NVRs, Face identification and integrated with access control system.

## Why ZKiVision ?



Completed Network Video Surveillance Products Lines



Video-based Face Identification Solutions



Video Surveillance & Access Control System Integration Solutions

## IR Weatherproof Bullet

ZKIR3

- Video Compression: H.264
- Highest Resolution: Megapixel (1280\*720)
- Image Sensor: 1/3.2"CMOS
- Lens: 4 or 12mm fixed lens
- IR Distance: 15 or 30m
- Sensitivity: 0.1Lux or 0Lux (IR on)
- Protection Rating: IP66
- Storage: Up to 64GB SD Card local storage
- Standard Function: Alarm, Two-way voice intercom, 485controller, Reset
- Optional Function: POE, Wi-Fi, WDR
- Network Protocol: TCP/IP, HTTP, UDP, ARP, SMTP, FTP, DHCP, NTP



## Standard Box

ZKIP3

- Video Compression: H.264
- Highest Resolution: Megapixel (1280\*720)
- Image Sensor: 1/3.2"CMOS
- Sensitivity: 0.1Lux/F1.2
- Storage: Up to 64GB SD Card local storage
- Standard Function: Alarm, Two-way voice intercom, 485controller, Reset
- Optional Function: POE, Wi-Fi, WDR
- Network Protocol: TCP/IP, HTTP, UDP, ARP, SMTP, FTP, DHCP, NTP



## IR Vandal-proof Dome

ZKMD3

- Video Compression: H.264
- Highest Resolution: Megapixel (1280\*720)
- Image Sensor: 1/3.2"CMOS
- Lens: 4~9mm
- IR Distance: 10~15m
- Sensitivity: 0.1Lux or 0Lux (IR on)
- Protection Rating: IP66
- Storage: Up to 64GB SD Card local storage
- Standard Function: Alarm, Two-way voice intercom, 485controller, Reset
- Optional Function: POE, Wi-Fi, WDR
- Network Protocol: TCP/IP, HTTP, UDP, ARP, SMTP, FTP, DHCP, NTP



## Mini Dome

ZKMD4

- Video Compression: H.264
- Highest Resolution: Megapixel (1280\*720)
- Image Sensor: 1/3.2" CMOS
- Lens: 3.6mm fixed lens
- Sensitivity: 0.1Lux/F1.2
- Storage: Up to 16GB TF Card local storage
- Standard Function: Remote surveillance, TF card storage, Reset
- Optional Function: POE, Wi-Fi, WDR
- Network Protocol: TCP/IP, HTTP, UDP, ARP, SMTP, FTP, DHCP, NTP



## High Speed Dome

ZKSD3

- Video Compression: H.264
- Highest Resolution: 480TVL
- Image Sensor: 1/4" SONY CCD
- Sensitivity: 0.1Lux
- Zoom: 18X Optical, 12X Digital
- Horizontal Speed: 0.1°~250°/S
- Vertical Speed: 0.1°~100°/S
- Tilt Movement: 0°~92° tilt
- Protection Rating: IP66
- Storage: Up to 64GB SD Card local storage
- Standard Function: Alarm, Two-way voice intercom, 485controller, Reset
- Optional Function: POE, Wi-Fi



## Cube

ZKIP4

- Video Compression: H.264
- Highest Resolution: Megapixel (1280\*720)
- Image Sensor: 1/3.2" CMOS
- Lens: 3.6 mm fixed lens
- IR: Embedded Array IR LED
- WDR: >100db
- Sensitivity: 0.05 Lux/F1.2 at mini.
- Storage: Up to 16GB TF card local storage
- Standard Function: Built-in microphone and loudspeaker, two-way voice intercom
- Optional function: POE, Wi-Fi
- Network Protocol: TCP/IP, HTTP, UDP, ARP, SMTP, FTP, DHCP, NTP



## Video-based Face Identification Solutions



ZKIFACE software integrates the latest ZK high speed face identification algorithm with ZKIP Camera perfectly, which can realize the function of detecting, capturing and identifying 8 faces simultaneously per second. ZKIFACE software can register the user by capturing his face automatically in real time or by his photo. It gathers the functions of real-time video surveillance and face identification, simple time attendance management, access control linkage, alarm output, electronic map and silt screen.

## Application



Special channel for customs to identify smuggler



Patients' family identification for ICU in the hospital



Family identification for kinder garden



Criminal investigation



Tam criminal investigation



VIP reception window

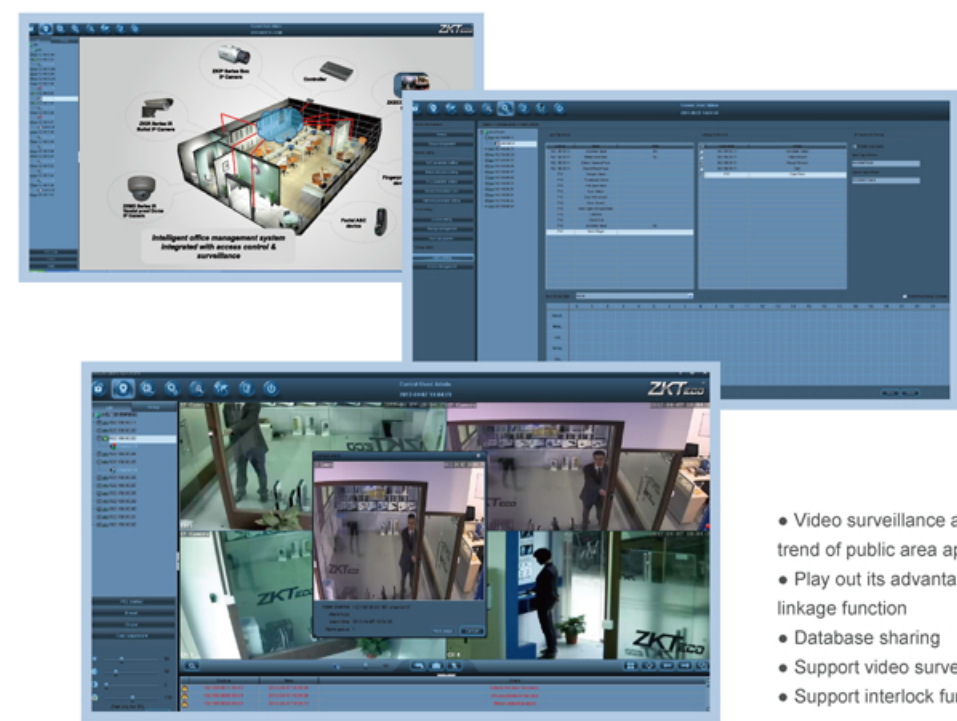


Simple time attendance management for small company



Coffer Access Control

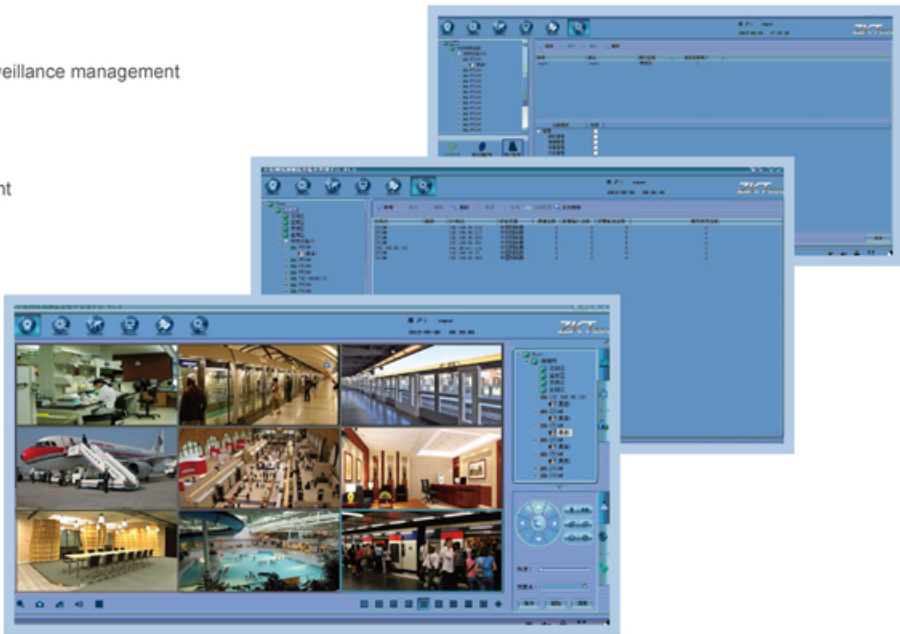
# Video Surveillance & Access Control System Integration Solutions



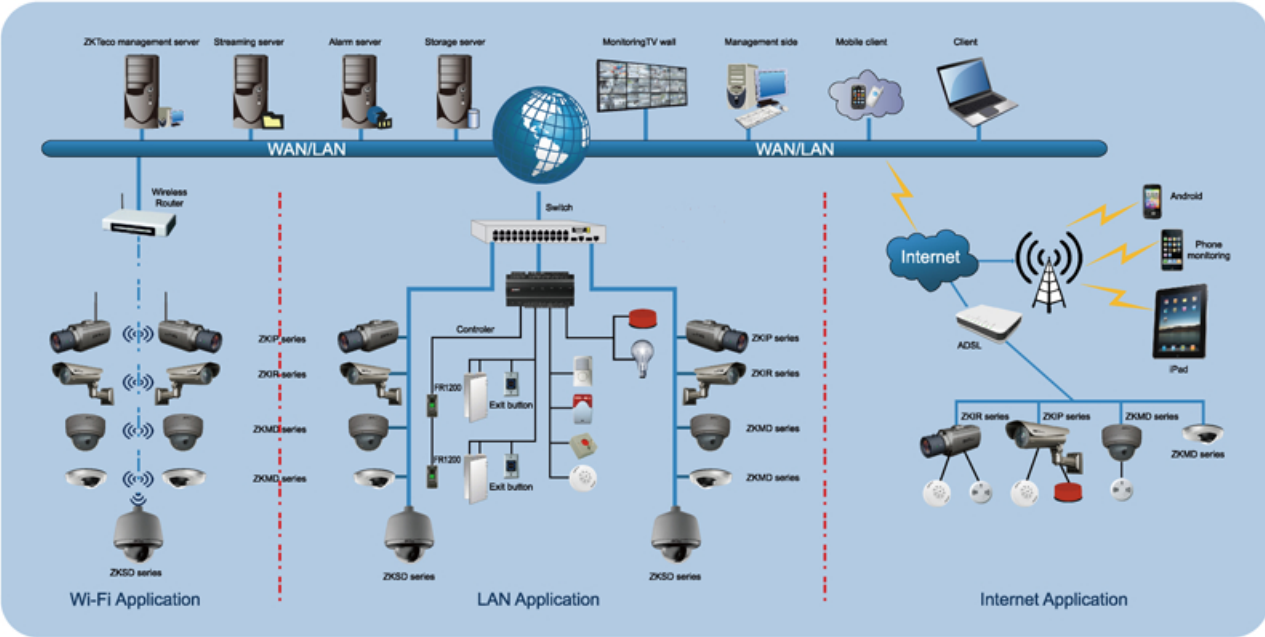
- Video surveillance and Access control system is the trend of public area application
- Play out its advantages of video and access control linkage function
- Database sharing
- Support video surveillance and alarm linkage function
- Support interlock function

## CMS(Central Management System)






- Support thousands of channel video surveillance management
- Support digital matrix
- Support disk array and internet storage
- Support streaming media forwarding
- Support multi-channel alarm management



# Security System Linkage:



## New Product Introduction

					
Series Name	ZKIP4	ZKIR4	ZKSD4	ZKNV100	ZKDVS100
Introduction	Cube IP Camera	Small IR Bullet Camera	PIZ IP Camera	NVR	DVS
Sensor	CMOS	CMOS	CMOS	/	/
Resolution	Megapixel	Megapixel	Megapixel	/	/
Channels Supported	/	/	/	4 to 8 channels	1channel
Audio Communication	YES	YES	YES	YES	YES
Alarm	YES	YES	YES	YES	YES
Networking	10/100M	10/100M	10/100M	10/100M	10/100M
USB	N/A	N/A	N/A	N/A	N/A
POE	Optional	Optional	Optional	Optional	/
Wi-Fi	Optional	Optional	Optional	Optional	/

## ZKiVision Client Software:

- Real-time 16 channels living monitoring and 4 channels playback
- Simultaneous recording and snap function at main stream
- Remote control PTZ, preset points, PTZ tours, lens control
- Triggered alarms like motion detection, input alarm, network abrupton, local disk error, etc
- Alarm linkage for recording and voice
- Automatic search on terminal devices in LAN and group management
- Multiple level user management for high security operations
- Search on device operation records
- Electronic Map





# ZKBioLock—Intelligent Lock Product Line

ZK started to manufacture fingerprint locks in 2005. In May 2011, an international brand was created which consists of high-tech consumer products including intelligent door lock, hotel lock, fingerprint door lock, and face recognition lock.

## Fingerprint Door Lock

### L4000/L5000

#### Features :

- Intuitive menu, easy operation, intelligent communication
- Robust housing made of Zinc alloy
- European standard mortise
- OLED display and USB interface
- Can be opened by fingerprint, card, PIN or Key
- Capacity: 500 user templates, 100 passwords, 100 cards, 30,000 users
- Front panel colors: blue, black, pink, grey and silver polishing

#### Specification:

Material	Zinc Alloy
Front Panel Colors	Black/Blue/White/Polishing
Display	OLED
Fingerprint templates	500
Password	100
Event capacity	30,000
Communication	USB flash disk
Power input	4 x 1.5V AA Battery
Backup Unlock Mechanism	Emergency battery & Mechanical key
Options	ID Card , Mifare Card



### L7000/L7000-U

#### Features:

- Simple menu, easy operation, intelligent communication
- Zinc alloy die-casting
- Can be opened by fingerprint, PIN or Key
- American Standard Cylinder, optional single and double bolt
- OLED display and USB interface
- Front panel color option: black, silver & black
- 500 user templates, 100 passwords, 30,000user capacity
- Easy for installation
- Can change the handle from Right to Left
- DIY design

#### Specification:

Material	Zinc Alloy
Display	OLED
Fingerprint templates	500
Password	100
Event capacity	30,000
Communication	USB flash disk (L7000-U only)
Power input	4 x 1.5V AA Battery
Backup Unlock Mechanism	Emergency battery & Mechanical key



# Anti-theft Fingerprint Lock

## L9000

- User-friendly menu, intelligent communication
- Slip shell can protect display
- Special-designed lock cylinder
- OLED display and USB interface
- Can be opened by fingerprint, PIN or Key
- Can operate it with external 9V battery during emergency power outages
- Anti-theft, anti-disturbing and anti-unclenching functions
- Front panel colors: antique brass, polishing

### Features:

Material	Zinc Alloy
Display	OLED
Fingerprint templates	500
Password	100
Event capacity	30,000
Communication	USB flash disk
Power input	4 AA Battery, working voltage around 4.2V-6V



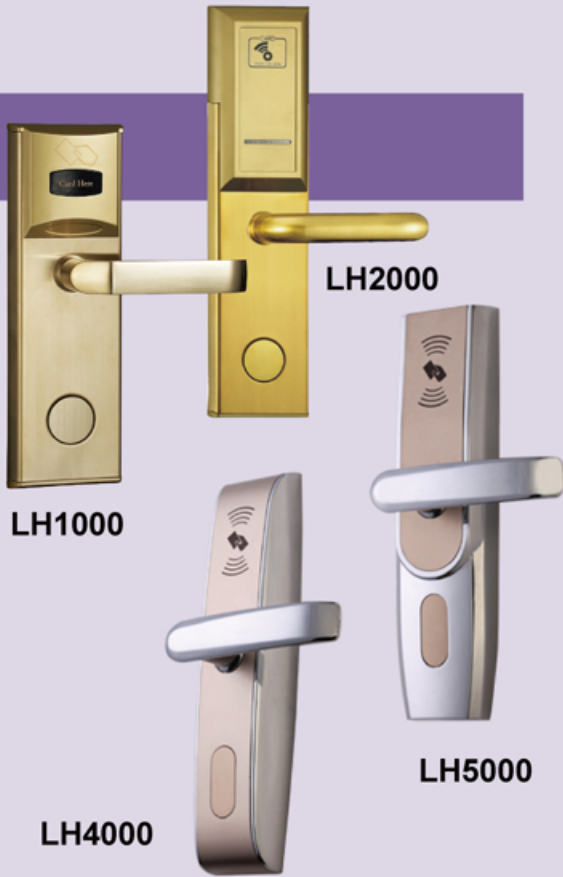
# Hotel Door Lock

## LH1000/LH2000/LH4000/LH5000

- Standalone electronic lock with Mifare technology
- Elegant design
- U.S. Mortise with 5 latches
- Robust housing made of Zinc alloy
- Total solution with Hotel management software plus Mifare card encoder
- CE, FCC approved
- Low battery voltage warning
- Unlock with an emergency mechanical key

### Features:

Material	Zinc Alloy
Mortise	U.S. Mortise with 5 latches
Type of Card	Mifare Card
Encoder	100 software
Type	Hotel management software
Power input	4x1.5AA battery



## HL100

- Advanced Biometric Technology
- Rugged Steel Construction
- Illuminated keypad Entry
- Can be opened by Fingerprint, PIN or Key
- 100 User Fingerprint or PIN Capacity
- American Standard Cylinder
- External battery Backup connector
- Low Battery Warning Reversible lever for Left or Right Operation
- Easy to Install with No Wiring Required



Note: If you are in North America or South America area, please contact ZK U.S.A Subsidiary to learn more about HL100. Thank you.

# Upcoming Facial Identification Lock

- European style professional and elegant design
- Can be opened by Face, PIN or Key
- European Standard Cylinder
- 3 inches TFT screen
- 100 faces, 100 passwords, 200 cards, 200 users, 30,000 records
- USB interface
- High pixel Double camera
- Intelligent operation menu
- Optional access control function
- Low battery warning





## AFIS (Automatic Fingerprint Identification System) Product Line

## What's AFIS?

- AFIS--Automatic Fingerprint Identification System
- AFIS – For integrators who wish to use AFIS for Civil ID and Commercial ID projects
- Provide large-scale fingerprint matching
- Capture the single finger, rolling finger, two-slap finger, four-slap finger
- Provide safer, faster, more accurate and more convenient security services

## Why ZKAFIS?

- Advanced proprietary biometric technology
- Dedicated to hardware design for many years
- Experienced to design high quality optical sensor
- Experienced to provide AFIS OEM and ODM service
- Provide independent and professional AFIS SDK
- Best price/performance ratio

## Market Position

- Vote system
- Border inspection
- Bank security
- Hospital case management
- Business VIP
- Carport management, etc



## Single Fingerprint Scanner-U100



### Features:

- High quality of fingerprint image
- Capture single fingerprint
- High quality of dry, wet and rough fingerprints
- Operating system: Windows XP, Windows 2003, Windows Vista, Windows 7
- Portable, IP54
- Equipped with a security keyhole

### Specifications:

Image resolution	500 DPI,256 gray-levels/8bit.
Antistatic	8KV
Operating temperature	-10°C to 60°C.
Operating humidity	20% to 85%.
Interface	USB 2.0 HighSpeed (data & power)
Capturing speed	> 15 fps
Dimension (W×L×H)	145mm×67mm×54mm
Platen Size (W×L)	30mm×30mm(1.18"×1.18")



## Fingerprint 2-slap Scanner-U200



### Features:

- High quality of fingerprint image
- Capture single fingerprint, two-slap, rolling fingerprint
- High quality of dry, wet and rough fingerprints
- Operating system: Windows XP, Windows 2003, Vista, Windows 7
- Portable, IP54
- Equipped with a security keyhole

### Specifications:

Image resolution	500 DPI,256 gray-levels/8bit.
Antistatic	8KV
Operating temperature	-10°C to 60°C.
Operating humidity	20% to 85%.
Interface	USB 2.0 HighSpeed (data & power)
Capturing speed	> 15 fps
Dimension (W×L×H)	172mm×104mm×81mm
Platen Size (W×L)	43mm×42mm(1.69"×1.65")



## Fingerprint 4-slap Scanner-U400



### Features:

- High quality of fingerprint image
- Capture single fingerprint, two-slap, four-slap and rolling fingerprint
- High quality of dry, wet and rough fingerprints
- Operating system: Windows XP, Windows 2003, Vista, Windows 7
- Portable, IP54
- Equipped with a security keyhole

### Specifications:

Image resolution	500 DPI,256 gray-levels/8bit.
Antistatic	> 8KV
Operating temperature	-10°C to 60°C.
Operating humidity	20% to 85%.
Interface	USB 2.0 HighSpeed (data & power)
Capturing speed	> 2 fps
Dimension (W×L×H)	166mm×150mm×139mm
Platen Size (W×L)	85.8mm×82.5mm(3.37"×3.24")



## Application



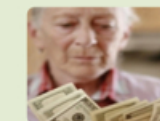
- Voting systems**
- Registration for elections;



- Border control**
- Online matching for homeland security;
  - Identification on airports;



- Health**
- Health insurance cards;
  - Patient record systems;



- Social benefits**
- Ration cards;
  - Salary payments;



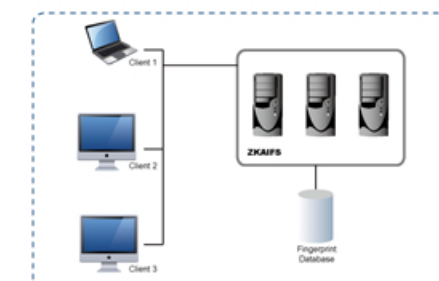
- Retail**
- Loyalty and membership programs;



- Banks**
- Prevent duplicate credit account registration;
  - Check cashing and money transfer fraud prevention;
  - Customer record to identify customer;

## ZKAFIS SDK:

- Client-Server Architecture
- Standard Hardware
- Scalable Solution
- Sensor Independent
- Database Independent
- Fast and Accurate
- OS Independent





ZKSoftware | ZKAccess | ZKiVision | ZKAFIS | ZKBiolock



ZKSoftware | ZKAccess | ZKiVision | ZKAFIS | ZKBiolock

#### China

ZK Building, Wuhe Road, Gangtuo, Bantian, Buji Town,  
Longgang District, Shenzhen China 518129  
Tel: +86 755-89602345  
Fax: +86 755-89602394  
Website: www.zkteco.com

#### China Factory

ZKTeco (Dongguan) Industry Park, No. 26, Pingshan  
188, Tangxia,  
Dongguan, China

#### USA

201 Circle Drive North, Suite 116, Piscataway, NJ 08854, U.S.A.  
Tel: +1 732-412-6007  
Fax: +1 732-412-6008

#### Europe

Avenida Somosierra 24, 28700 S.S. de los Reyes, Madrid, Spain  
Tel: +34 916532891

#### South Africa

Unit 5, Wellness Corporate Park,  
Beethoven Street, Melodie, Hartbeespoort, North West,  
South Africa  
Tel: +27 12 259 1047

#### Brazil

R Hildebrando Thomaz de carvalho 117, Vila Mariana,  
Sao Paulo, Brazil. 04012-120  
Tel: +55 11-5082-4315  
Fax: +55 11-2495-8788

#### Dubai

P.O.Box: 54823 East Wing, 5EA#710, Dubai Airport Free  
Zone, Dubai, U.A.E  
Tel: +971 4 6091 310  
Fax: +971 508494166

#### Thailand

30th Floor, Unit B4, UM Tower, 9 Ramkhamhaeng Road,  
Suanluang, Bangkok 10250 Thailand  
Tel: 0066-027199154

#### Indonesia

Komp. Pergudangan Elang Laut, Tahap 3, Blok A1 no. 1  
Sentra Industri Terpadu, Pantai Indah Kapuk Jakarta  
14470, Indonesia  
Tel: +62 21 2921 8949  
Fax: +62 2921 8948

#### India

National Media Centre, House No.47,  
DLF Phase 3, Shankar Chowk,  
Gurgaon, Haryana, India-122010  
Tel: 0091-0124-2623170

#### Mexico

Dept B901, Sevilla 15, Juárez Cuauhtémoc, Ciudad de  
México, DF, Mexico  
Tel: 0052-55-52078969

#### Egypt

4 Abo El Fawares street, Taeran street,  
el hay el sabaa, Naser City, Cairo, Egypt  
Tel: +202-24055541



Like

The Leading Security  
and Time Management  
Solutions Provider

www.zkteco.com >>>

Copyright ©2012, ZKTeco Inc. All rights reserved.

ZKTeco may, at any time and without notice, make changes or improvements to the products and services offered and/or cease producing or commercializing them.